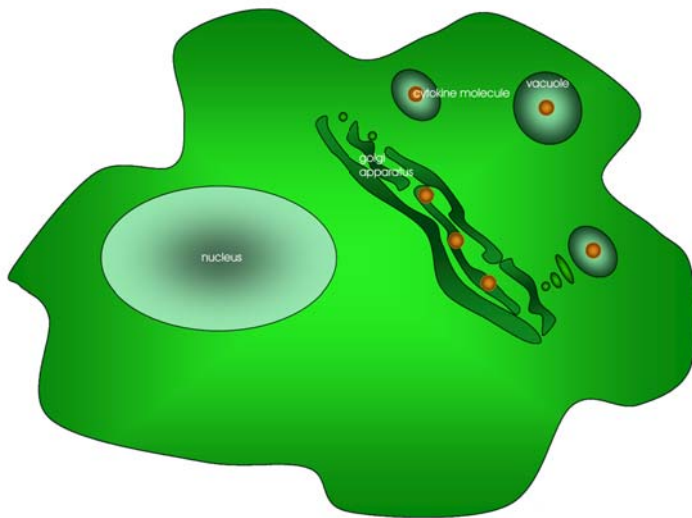


Macrophage



- Macrophages are non-specific immune cells that are produced in the bone marrow, then mature and reside in peripheral tissues
- Fc receptors on the macrophage surface bind to antigen-antibody complexes through the Fc portion of the antibody and this activates the macrophage and causes phagocytosis of the antigen-antibody complex, bacteria and other foreign bodies
- Macrophages contain an enzyme called **lysozyme** which digests the engulfed substances
- Activated macrophages can also act as antigen presenting cells